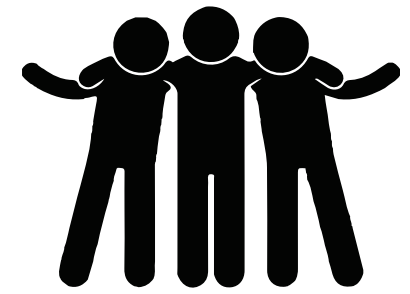




PSHE



Where it begins

In EYFS, pupils at Haughton St Giles learn about the world around them. They also learn how to interact with others respectfully. They consider how to care for our bodies including learning about diet, hygiene and teeth.

Hands-on learning

Pupils learn through videos and real-life scenarios. We use role-play to allow children to consider the feelings of others. Pupils showcase their learning through collaborative floor books in which a range of pupil's contributions are recorded.



Reading and vocabulary

Vocabulary is outlined by subject leaders and deliberately taught. Vocabulary in PSHE gets progressively more difficult and links between recurring themes.

Pupils learn through scenarios modelled by teachers. Staff use kind and respectful language to model interactions with others.

Well-sequenced lessons

Teachers plan well-sequenced lessons with the support of knowledge organisers which provide guidance for the order and content of lessons. Key knowledge is outlined and CPD opportunities are provided. Subject leaders attend MAT training and disseminate to staff during staff meetings.

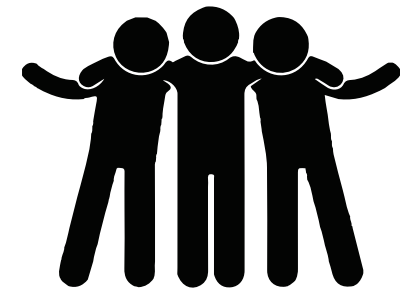


Inclusivity

PSHE includes all pupils in becoming social, healthy and respectful members of our community and the wider world. We ensure all children have a chance to contribute to discussions, share their thoughts and feelings and act out strategies. Pupils have chance to speak to adults openly and honestly.



PSHE



Cross curricular links

During PSHE lessons, a range of disciplines are used to express our understanding. Writing and reading are important to comprehend and express our beliefs or those of others. We use Maths during topics such as 'Money Matters' as well as Science when learning about changes to our bodies.



Cultural Capital

Leaders have created a cultural capital map for teachers to follow. This provides experiences linked deliberately to PSHE topics we may otherwise miss out on. In PSHE, this includes links to Santander's Money Matters scheme to teach pupils about savings, tax and salaries.

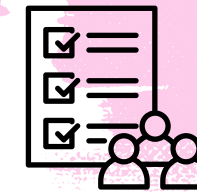


Disciplinary knowledge

Pupils at Houghton St. Giles learn **how** to be a good citizen. They have practise in acting out how we should react in certain situations. They are given the skills to be resilient, confident and positive members of society.

Substantive knowledge

Guided by the National Curriculum, subject leaders have created a two-year rolling programme which is both progressive and challenging to support our mixed-age school. Our PSHE curriculum includes learning about changes to families or our bodies, money and financial literacy and how to tackle unkindness or bullying.



Assessment

Teachers assess throughout topics and not just at the end. They balance assessment of substantive and disciplinary knowledge. Quizzes help to keep assessment engaging for pupils. Teachers assess pupils throughout the unit using questioning and activities to monitor how deeply pupils understand their learning. In PSHE, teachers often use Kahoot to assess learning.